

Magic Submitter Questions and Answers

Contents

Troubleshooting.....	3
1. Where can I found educational materials on how to use Magic Submitter?.....	3
2. Problems with Magic Submitter registration	3
3. MS keeps crashing	3
4. Deleted services by mistake	4
5. My Links Not Showing Correctly On The Site.....	4
6. How to create Magic Submitter profile?	4
7. Can I install Magic Submitter on Mac?	4
Settings	5
8. How to use captchas?	5
9. How to use Hide My Ass service?	5
10. How To Set Up MS on VPS Hosting	5
Email Related	5
11. How to setup "Read Emails" task	5
12. Checking Gmail email doesn't work	6
13. Problem connecting to email account	6
Scheduler.....	7
14. The Scheduler Not Working.....	7
15. How does the Restart Scheduler Work?.....	7
16. Does the scheduler verify emails after having creating accounts?	8
17. What to do with completed Scheduler tasks?	8
Database Update, Backup, Restore	8
18. Where can I get the latest version of MS?	8
19. Unable to connect to database problem	8
20. Updating MS	8
21. Moving MS to another PC	8
Campaigns.....	9
22. Campaign is not working? When I look at it nothing seems to have worked. Nothing seems to be running in Scheduler.....	9
23. What is the best Campaign Template?	9
24. How to use Campaign Reports?	9
Link Manger	9
25. Link Manager Grabs Others Articles Links	9
26. Link Manager Not Pulling ALL Links	9
Submit Items.....	10
27. Filling Out All Submission Content At Once - how to use one form to fill out title, keywords, summary, article, blog post etc all on one form.....	10
28. Spinning Titles	10
29. How Many Links Can I Use In Summaries & Descriptions Fields?	10
Payment, Billing, License.....	10
30. How to Cancels Subscription	10
31. How to change billing info.....	11
32. How To change Subscription email	11
33. I've Get Expired License Notice	11
34. What is \$4.95 Magic Submitter trial offer?.....	11
35. Why is my Magic Submitter account blocked?	11
36. I have used Magic Submitter trial before, where can I sign up with regular price?	12
37. How can I upgrade my Magic Submitter trial to full version?.....	12
38. How many computers can I install Magic Submitter on?	12
39. I would like to use Magic Submitter at my company. How many licenses do I need?.....	12
40. License invalid. System clock has been tampered	12

41.	Where can I sign up for annual subscription and how much does it cost?	12
Affiliate.....		13
42.	I want to promote Magic Submitter, where can I sign up?	13
43.	Is there any affiliate offer on promoting magic submitter yearly plan?	13

Troubleshooting

1. Where can I found educational materials on how to use Magic Submitter?

Here you can find all the training videos on Magic Submitter as well as recording of our webinars:

<http://www.magicsubmitter.com/training>

2. Problems with Magic Submitter registration

Please make sure that you have Microsoft .NET Framework 3.5 SP1

You can download it on this page for free:

<http://www.microsoft.com/downloads/thankyou.aspx?familyId=ab99342f-5d1a-413d-8319-81da479ab0d7&displayLang=en>

If you use Windows server 2008

Please make sure that .net framework 3.5 sp1 is enabled on your server

<http://blogs.msdn.com/b/sqlblog/archive/2010/01/08/how-to-install-net-framework-3-5-sp1-on-windows-server-2008-r2-environments.aspx>

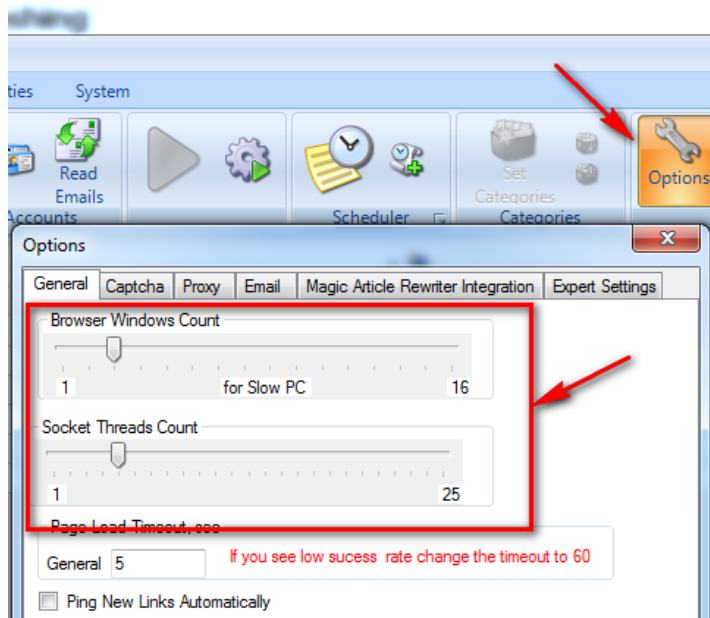
Before registering please FIRST disable your User Account Control in Windows Settings. Enter your email on registration screen and click Get License Key button. Then you can enable the User Account Control again.

Also you can right-click on MS icon and select Run as Administrator option. Enter your email on registration screen and click Get License Key button.

Also while registering please disable all your antivirus software, firewalls and Ip changing software like hide my ip or HMA

3. MS keeps crashing

Go to options screen, set browser windows to 3, and threads to 5



4. Deleted services by mistake

Go to system and then click Clear updates. Relaunch MS it should propose you to update db.

You will have lost any submission records for them though (although your back links will still exist).

5. My Links Not Showing Correctly On The Site

Make sure you put your links in html format with http:// prefix like `This is my site`

6. How to create Magic Submitter profile?

Click Create Profile button at the Profile Actions section.

Click Fill Profile button, select Hotmail and click OK button. Fill in the rest of the info like Web URL, Company and Company Info.

The rest software will do for you, you will just need to enter captcha. After the process is finished select Mail Services from Services Types and you will see that Hotmail account was created.

Open profile again and Click Test Connection button and you will see dialog box asking Would you like to automatically create Hotmail account. Click Yes.

7. Can I install Magic Submitter on Mac?

Software is primarily for Windows but it will work on MAC if you have windows emulator like Parallels installed. Also you can install Magic Submitter on VPS.

Settings

8. How to use captchas?

You can solve captchas manually or use captcha services.

To set up captchas click Options button and then Captchas tab.

You sign up for captcha services at their sites and then enter credentials at MS screen.

9. How to use Hide My Ass service?

Just start it and it works in background. You don't need to set up anything for HMA in MS

10. How To Set Up MS on VPS Hosting

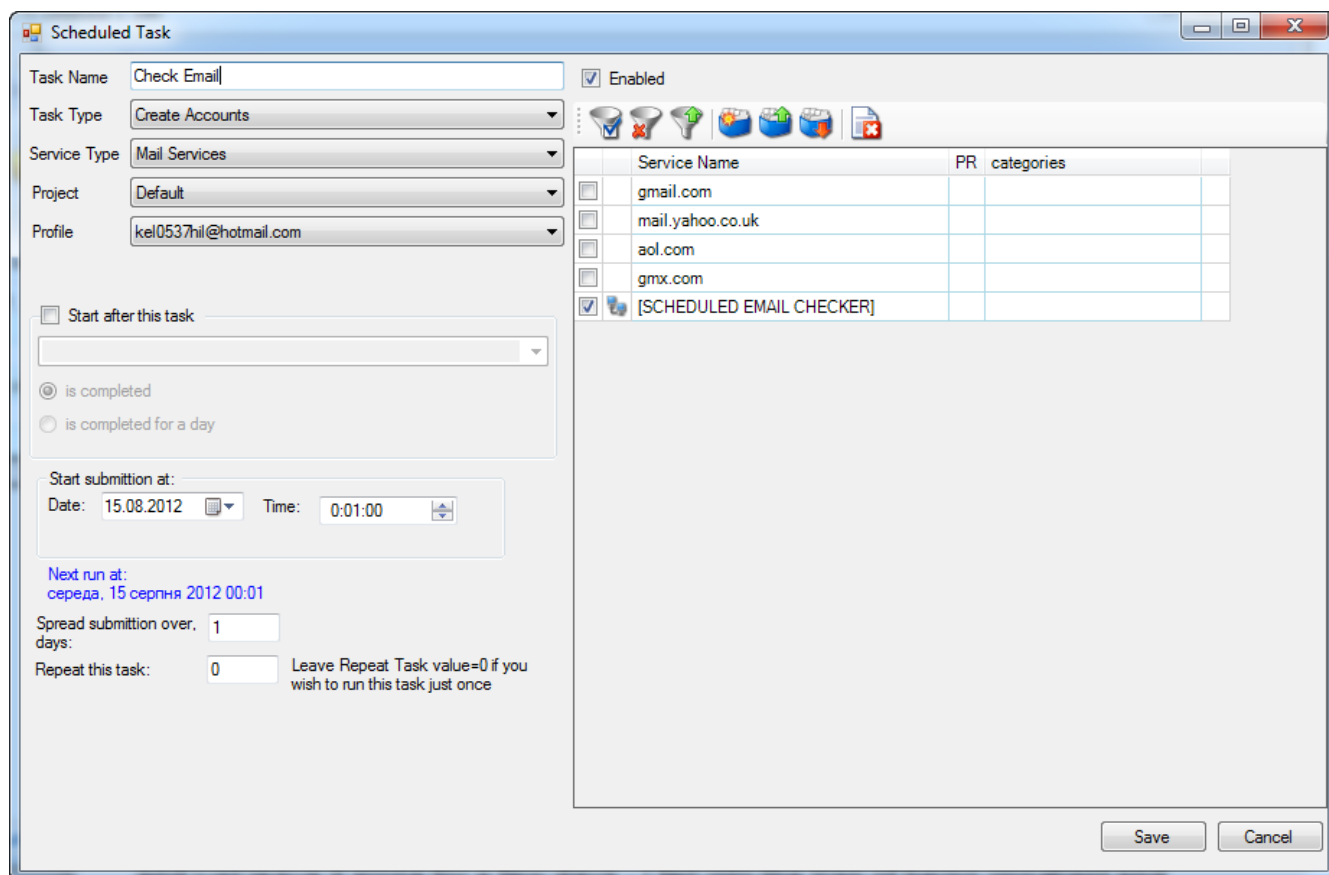
Here's the step by step strategy on how to set up Magic Submitter on a Virtual Private Server:

<http://www.youtube.com/watch?v=ENkO9UlyeHw>

Email Related

11. How to setup "Read Emails" task

Add Create Account task for [SCHEDULED EMAIL CHECKER] that is located in mail services service type



12. Checking Gmail email doesn't work

Login to your gmail account and make sure that Enable POP checkbox is checked on options screen

13. Problem connecting to email account

If you use HMA please disable it

Try also manually login in webbrowser to your account

Hotmal may delete email accounts sometime

In Magic Submitter it's better to use Download Precreated Hotmail account option.

If you're using your private email then check the POP settings of your email server and enter correct settings at Profile screen.

Forwarding:
[Learn more](#) Add a forwarding address

Tip: You can also forward only some of your mail by [creating a filter!](#)

POP Download:
[Learn more](#)

1. Status: POP is enabled for all mail that has arrived since 8/29/07
 Enable POP for all mail (even mail that's already been downloaded)
 Enable POP for mail that arrives from now on
 Disable POP

2. When messages are accessed with POP keep Gmail's copy in the Inbox

3. Configure your email client (e.g. Outlook, Eudora, Netscape Mail)
[Configuration instructions](#)

IMAP Access:
(access Gmail from other clients using IMAP)
[Learn more](#)

Status: IMAP is enabled
 Enable IMAP
 Disable IMAP

When I mark a message in IMAP as deleted:
 Auto-Expunge on - Immediately update the server. (default)
 Auto-Expunge off - Wait for the client to update the server.

When a message is marked as deleted and expunged from the last visible IMAP folder:
 Archive the message (default)
 Move the message to the Trash
 Immediately delete the message forever

Folder Size Limits
 Do not limit the number of messages in an IMAP folder (default)
 Limit IMAP folders to contain no more than this many messages 1,000

Configure your email client (e.g. Outlook, Thunderbird, iPhone)
[Configuration instructions](#)

Save Changes

Scheduler

14.The Scheduler Not Working

The point of scheduling is that it runs over the number of days you have specified. It makes some posts then goes to sleep until it runs again. The more you play with it and try and make adjustments by posting manually the more messed up you'll get.

The scheduler works fine but not exactly how we think it's going to work. Restart MS and just leave it alone for a few days - I fell into the trap of being impatient and restarting it and running them manually, it's something all us newbies seem to do. When just left alone without us poking around - it just does the work.

Get on with other work like setting up profiles, creating campaigns, setting up posts on schedules. What you will see (sooner or later) is the the green 'scheduler sleeping' in the bottom menu bar changing from time to time to run your schedules. Once you have a stack of Campaigns set up you'll be surprised at how quickly the back links start to add up.

15.How does the Restart Scheduler Work?

Restart scheduler removes current task and tries to run the next one

16.Does the scheduler verify emails after having creating accounts?

Yes

17.What to do with completed Scheduler tasks?

You can delete those campaigns/tasks from the Scheduler in case if whole campaign is finished

Database Update, Backup, Restore

18.Where can I get the latest version of MS?

Here's the updates page:

http://www.magicsubmitter.com/umanager/ms_update.htm

19.Unable to connect to database problem

Go to system tab click restore button sort files by date modified and open latest modified file

20.Updating MS

When you open and there is an update MS will inform about it.

The software will try to download the updated version of the database if it succeeds then fine your stuff should be there. Restart MS after update.

If it fails go to the system tab and click the check button it should work and update the database.

If you are still having trouble then try going to the system tab and click clear update history and check for updates after.

21.Moving MS to another PC

1. Create folder on your PC. "MS Backups".
2. Go to System Tab in MS and click Backup button
2. Backup your current PC database to " MS Backups ". Then, it will be sitting there in case you need to refer to it later.
3. Transfer the backup file to your new PC

4. Start MS on new PC . Go to System tab and click restore button, choose file you have transferred

Campaigns

22. Campaign is not working? When I look at it nothing seems to have worked. Nothing seems to be running in Scheduler

Make sure that in the campaign designer you have your tasks scheduled at the Scheduler. Then restart MS and it will run your scheduled tasks

23. What is the best Campaign Template?

You have to try different templates and decide for your self which one works the best for your niche. Click Open template button to see templates available

24. How to use Campaign Reports?

Click Reports tab, then Campaign button, then select the campaigns you want to get reports for and click Create Reports button. You need to have Microsoft Excel installed to see report

Link Manger

25. Link Manager Grabs Others Articles Links

MS use regex search to find the articles, and sometimes other articles match that search. If you found such issue report it to support@magicsubmitter.com

26. Link Manager Not Pulling ALL Links

Sometimes, like with Article Directories, links are not collected immediately after submission as the articles are waiting for approval.

In 2 weeks you should run User Defined commands in order to collect links for approved articles. In other cases, links are coming to your email asking for approval so you should click Read Emails button to approve links and collect them to Links Manager.

Submit Items

27.Filling Out All Submission Content At Once - how to use one form to fill out title, keywords, summary, article, blog post etc all on one form.

Go to the Main Tab - Select Service Type and your 'Tilte' should be there and you can do your posting. to Edit got to Manage Items, select the Project name, select the Service Type.

28.Spining Titles

When you spin your content's title like {title 1|title 2|title 3|title 4} it will sometimes select the same,

that's why you should spin single words inside the title, like this.

{My {nice|great|fine} title is {here|right here}}|I {to am|am} also a {nice|beautiful} {title|post title}|Yes {maybe|could be|possible} but I am the nicest}

With spins inside spins (you should always use that) you can go as deep as you want, this way it would almost be impossible to have the same title show 2 times.

29.How Many Links Can I Use In Summaries & Descriptions Fields?

You can put 1-2 links in the summary or description fields. Also make sure your links are in html format with http:// prefix like This is my site

Payment, Billing, License

30.How to Cancels Subscription

If you like to perform cancelation request please follow this instruction

1. If you purchased Magic Submitter via Paypal simply login to your Paypal account and cancel subscription
2. If you purchased Magic Submitter via credit card using Clickbank. Locate your order number. You can find this in the email that you received immediately after your purchase. Click CLIENT SUPPORT link and choose cancelation request
3. If you purchased Magic Submitter via credit card using 2Checkout (2CO) simply email our Customer Support department support@magicsubmitter.com with you membership details and we will cancel your subscription for you.

31.How to change billing info

If you purchase through 2checkout use this link

https://www.2checkout.com/va/sales/customer/change_billing_method

clickbank

<https://www.clickbank.com/orderDetail.htm>

32.How To change Subscription email

If you purchase through 2checkout use this link

https://www.2checkout.com/va/sales/customer/change_billing_method

clickbank

<https://www.clickbank.com/orderDetail.htm>

Then contact Customer Support department support@magicsubmitter.com with your old and new email address

33. I've Get Expired License Notice

You just have to reregister your copy of the software - please enter your email on registration screen and click Get License Key button.

34. What is \$4.95 Magic Submitter trial offer?

The trial month is \$4.95 and this enables you to be able to submit your content to 10 sites in each category for a total of 100+ sites.

This allows you to learn Magic Submitter and put to the test on your own sites so you can see how powerful it is.

If you like what you see and feel that you are satisfied with Magic Submitter just go to this page and chose the upgrade option:

<http://www.magicsubmitter.com/upgrade/>

All sales are final and no refunds are available after purchase Magic Submitter Upgrade

Please don't forget to email me at support@magicsubmitter.com telling me that you have upgraded so I can cancel your trial order.

35. Why is my Magic Submitter account blocked?

It could happen if you were not charged for the next month usage or bought Magic Submitter trial for the second time (you cannot buy trial for more than once)

Use the link below to renew your subscription:

<http://www.magicsubmitter.com/returning/>

36.I have used Magic Submitter trial before, where can I sign up with regular price?

Please use the link below:

<http://www.magicsubmitter.com/returning/>

37.How can I upgrade my Magic Submitter trial to full version?

You can upgrade using link below:

<http://www.magicsubmitter.com/upgrade/>

38.How many computers can I install Magic Submitter on?

You can install Magic Submitter on one PC with one license for purpose of traveling you may install MS on second PC but do not use both copies at the same time

there is discount system for multiple licenses

2 total licenses you may run MS on 3 PCs

3 licenses 5 PCs

4 Licenses 7PCs

5 Licenses 10PCs

to purchase license pack use this link

<http://www.magicsubmitter.com/returning>

send me email to support@magicsubmitter.com after license pack purchase

39.I would like to use Magic Submitter at my company. How many licenses do I need?

You have to buy the copy of Magic Submitter for each of your employee. And you can transfer your own license.

There is discount system:

2 Licenses 3 PCs

3 Licenses 5 Pcs

4 Licenses 7Pcs

5 Licenses 10Pc

40.License invalid. System clock has been tampered

The problem is with your date and timezone settings. Try to set up them correctly

41.Where can I sign up for annual subscription and how much does it cost?

Annual subscription costs \$474, you can sign up using link below:
<http://www.magicsubmitter.com/annual/>

Affiliate

42.I want to promote Magic Submitter, where can I sign up?

You can sign up here:

<http://magicsubmitter.com/affiliate/>

43.Is there any affiliate offer on promoting magic submitter yearly plan?

No, affiliate offer is available only for monthly subscriptions.